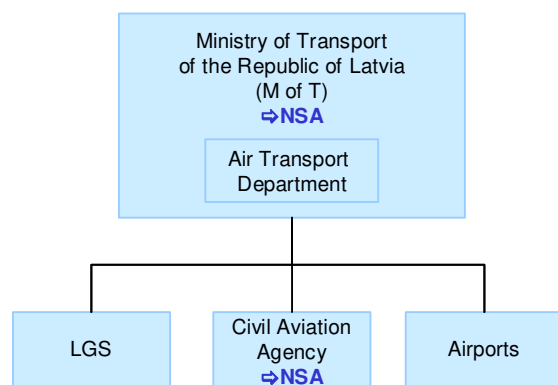


www.lgs.lv

Institutional arrangements and links (2017)



Status (2017)

- Joint-stock company since 1997
- 100% State-owned (Ministry of Transport)

National Supervisory Authority (NSA):

- MoT (for policy and economic issues)
- Civil Aviation Agency (for safety, operational aspects, certification and licensing issues)

Body responsible for:

Safety Regulation

Civil Aviation Agency

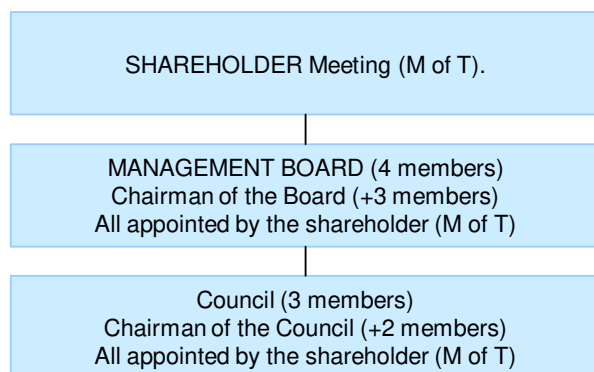
Airspace Regulation

Civil Aviation Agency

Economic Regulation

Air Transport Department and Cabinet of Ministers (Government)

Corporate governance structure (2017)



LGS (2017)

SHAREHOLDER'S REPRESENTATIVE:

Dzineta Innusa (Ministry of Transport, Deputy State Secretary for Legal and Administrative Affairs)

CHAIRMAN OF THE BOARD:

Davids Taurins

CHAIRMAN OF THE COUNCIL:

Dins Merirands

Scope of services (2015)

<input checked="" type="checkbox"/> GAT	<input checked="" type="checkbox"/> Upper Airspace	<input type="checkbox"/> Oceanic ANS
<input type="checkbox"/> OAT	<input checked="" type="checkbox"/> Lower Airspace	<input checked="" type="checkbox"/> MET

- ATC services delegated to Latvia by Lithuania over a part of the Baltic Sea

Operational ATS units (2015)

- 1 ACC (Riga)
- 2 APPs (Riga, Liepaja)
- 1 TWRs (Riga)
- 1 AFIS/FIC* (Liepaja)

*FIC for western part of Riga FIR

Key financial and operational figures (ACE 2015)

Gate-to-gate total revenues (M€)	25
Gate-to-gate total costs (M€)	26
Gate-to-gate ATM/CNS provision costs (M€)	23
Gate-to-gate total ATM/CNS assets(M€)	19
Gate-to-gate ANS total capex (M€)	3
ATCOs in OPS	92
Gate-to-gate total staff (incl. MET staff*)	354
Total IFR flight-hours controlled by ANSP ('000)	77
IFR airport movements controlled by ANSP ('000)	68
En-route sectors	4
Minutes of ATFM delays ('000)	0

* if applicable

Size (2015)

Size of controlled airspace: 95 900 km²

