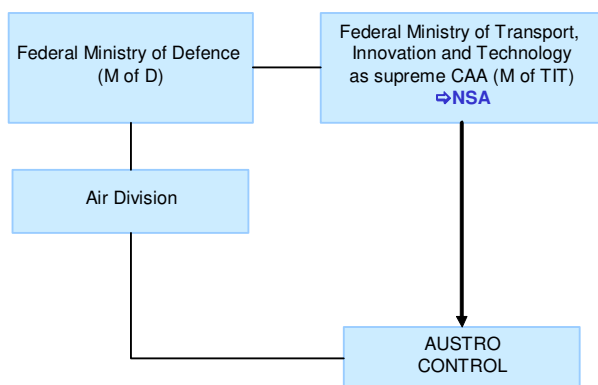


**Institutional arrangements and links (2017)**

**Status (2017)**

- Private limited company as of 1994
- 100% State-owned (Law makes provision for Austrian Airports to own up to 49 %)

**National Supervisory Authority (NSA):**

Federal Ministry of Transport, Innovation and Technology (M of TIT)

**Body responsible for:**
**Safety Regulation**

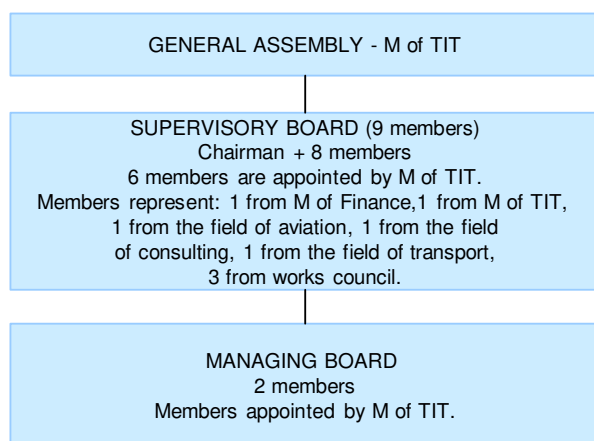
The power for regulatory decisions including safety oversight lies within the M of TIT

**Airspace Regulation**

M of TIT, normally on basis of proposals of Austro Control

**Economic Regulation**

Covered by the National Supervisory Authority

**Corporate governance structure (2017)**

**Austro Control (2017)**
**CHAIRMAN OF THE SUPERVISORY BOARD:**

Mag. Karin Zipperer

**MANAGING BOARD:**

Dr. Heinz Sommerbauer  
Thomas Hoffmann, MSc

**Scope of services (2015)**

<input checked="" type="checkbox"/> GAT	<input checked="" type="checkbox"/> Upper Airspace	<input type="checkbox"/> Oceanic ANS
<input type="checkbox"/> OAT	<input checked="" type="checkbox"/> Lower Airspace	<input checked="" type="checkbox"/> MET

**Operational ATS units (2015)**

1 ACC (Wien)  
6 APPs (Wien, Graz, Innsbruck, Klagenfurt, Linz, Salzburg)  
6 TWRs

**Key financial and operational figures (ACE 2015)**

Gate-to-gate total revenues (M€)	244
Gate-to-gate total costs (M€)	217
Gate-to-gate ATM/CNS provision costs (M€)	186
Gate-to-gate total ATM/CNS assets (M€)	168
Gate-to-gate ANS total capex (M€)	21
ATCOs in OPS	294
Gate-to-gate total staff (incl. MET staff*)	855
Total IFR flight-hours controlled by ANSP ('000)	281
IFR airport movements controlled by ANSP ('000)	331
En-route sectors	13
Minutes of ATFM delays ('000)	201

\* if applicable

**Size (2015)**

Size of controlled airspace: 80 900 km<sup>2</sup>

